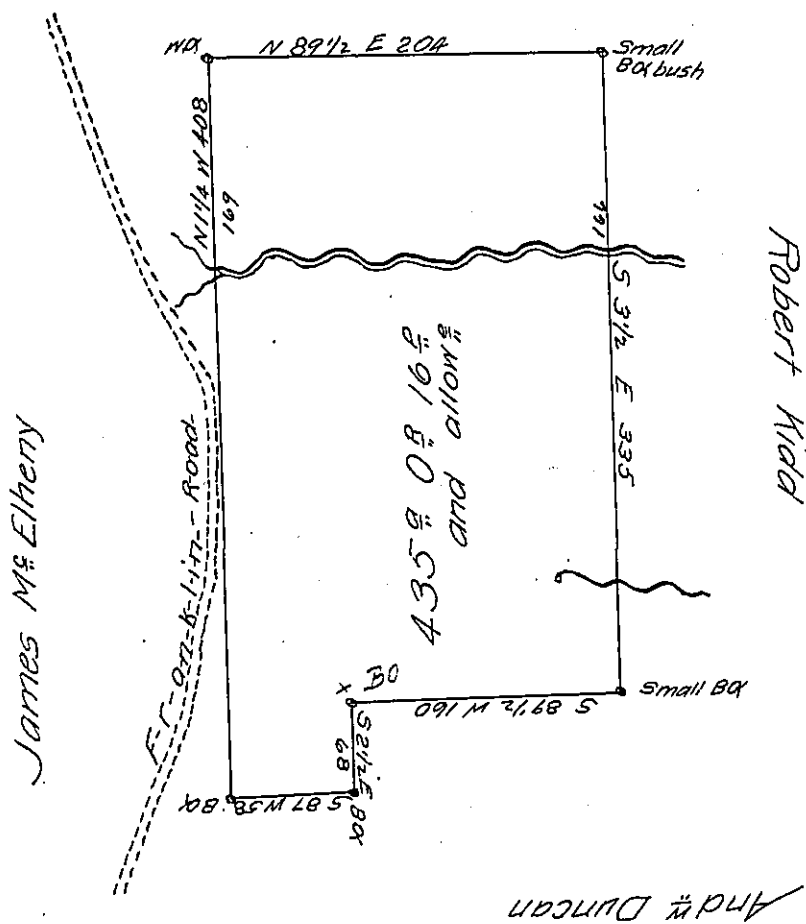


1-192 13
H22-76
1493.

Wm Rogers



A Draught of a tract of land Situate in Pine Township Allegheny County on the waters of Pine creek containing four hundred and thirty five acres and sixteen perches & allowance of six p^{ts} & ca Survey executed December 19th 1825th Hardy Rundle-by virtue of his improvement & settlement. Note the said Hardy Rundle was living on the said tract of land ~~at the~~ with his family and engaged improveing the same at the date of Survey.

Gabriel Hiester Jr. Esq. S.G. } R. Hilands D.S.
Commonwealth of Pennsylv^a } Allegheny County

IN TESTIMONY that the above is a copy of the original remaining on file in the Department of Internal Affairs of Pennsylvania, made conformably to an Act of Assembly approved the 16th day of February, 1833, I have hereunto set my Hand and caused the Seal of said Department to be affixed at Harrisburg, this twenty eight day of August 1906

Isaac D. Brown
Secretary of Internal Affairs.